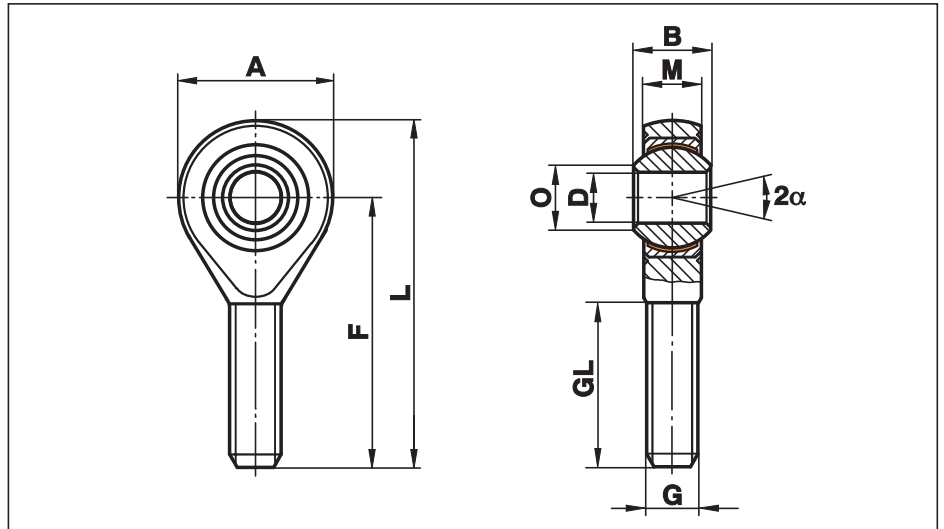


Rod Ends Series K - Maintenance Free

Series GASW

Rod End with male thread and PTFE liner

For use at dynamic loads



Size (D H7)	B	M	A	F	L	O	G	GL	Static load C ₀ kN	Dynamic load C kN	Limiting speed rev/min	Maximum Pivoting Angle α (°)	Weight g
5	8	6,00	18	33	42	7,7	M 5	19	4,3	7,5	600	13	13
6	9	6,75	20	36	46	8,9	M 6	21	6,0	9,3	530	13	20
8	12	9,00	24	42	54	10,4	M 8	25	11,0	16,7	420	14	33
10	14	10,50	28	48	62	12,9	M 10	28	17,4	23,4	350	13	56
12	16	12,00	32	54	70	15,4	M 12	32	23,5	32,0	300	13	87
14	19	13,50	36	60	78	16,8	M 14	38	21,0	42,0	260	16	129
16	21	15,00	42	66	87	19,3	M 16	40	32,0	52,5	230	15	189
18	23	16,50	46	72	95	21,8	M 18x1,5	44	38,5	64,0	210	15	267
20	25	18,00	50	78	103	24,3	M 20x1,5	47	44,0	78,0	190	14	348
22	28	20,00	54	84	111	25,8	M 22x1,5	51	53,0	97,0	170	15	443
25	31	22,00	60	94	124	29,6	M 24x2	57	61,0	122,0	150	15	600
30	37	25,00	70	110	145	34,8	M 30x2	71	82,0	168,0	130	17	1030
35	43	28,00	80	125	165	37,7	M 36x2	73	101,0	206,0	110	19	1600
40	49	35,00	90	142	187	44,2	M 42x2	78	124,0	286,0	100	16	2570
50	60	45,00	116	185	243	55,9	M 48x2	105	308,0	485,0	80	14	4800

only for short-term revolutions recommended

Materials:

Housing: up to size 12 turned, from free-cutting steel to 9SMnPb28K, 12L13, galvanised
from size 14 forged, from heat-treated galvanised steel to C22, M1023
size 50 turned from heat-treated galvanised steel to C45, Aisi 1045

Insert: Free-cutting steel to 9SMnPb28K, 12L13, with PTFE liner bonded to the inner surface

Ball: Bearing steel to 100Cr6, Aisi 52100, hardened, ground, polished

This series is also available sealed (see page 52) or with threaded bolt (see page 53).

⚠ Please note: The dynamic load "C" of the bearing of some rod ends is in some sizes higher than the static load "C₀" of the rod end.